

auto electrical parts

Technical Information Sheet

Part No. 0-300-50

Rear lamp, stop/tail/direction indicator/reflex reflector.
12/24 volt LED. l 170 x w 33 h 92mm. ECE approved.

Additional information

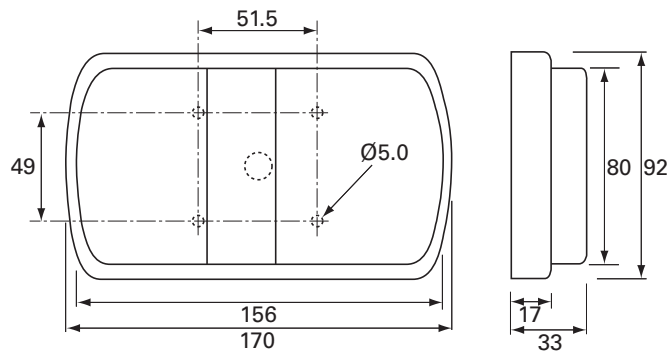
Supplied with flying lead 240mm, exit centre rear.

Wiring:

White: -ve
Brown: Tail
Red: Stop
Yellow: Indicator



Technical Drawing (not to scale)



Specification

Type	LED rear lamp stop/tail/direction indicator/reflex reflector.
Voltage	12-30 volt dc
LEDs	Tail/Stop 40 red, indicator 40 amber
Lens	Polycarbonate
Base	ABS
Weight	340g
Dimensions	l 170 x w 33 h x 92mm
Compliance	ECE

The information contained in this document is correct to the best of our knowledge at the time of printing. However, specifications may change at any time without notice.